



MONTHLY MEMBERSHIP PROGRESS REPORT

District 201N4

Results as of: 04/30/2019

GMT: ANN ELDRIDGE

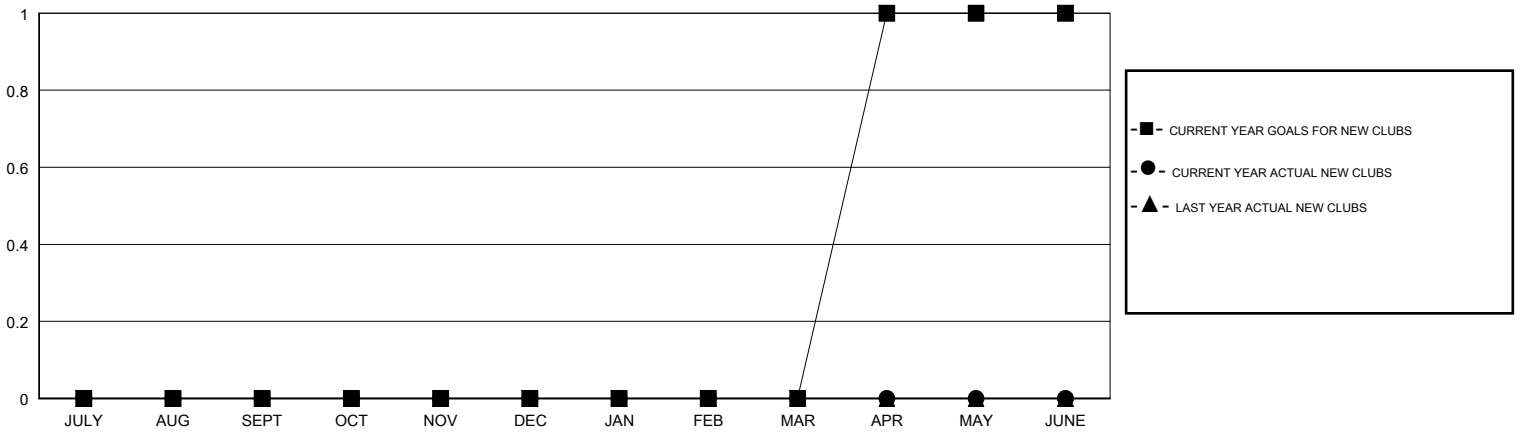
LOCATION AUSTRALIA

GMT CA

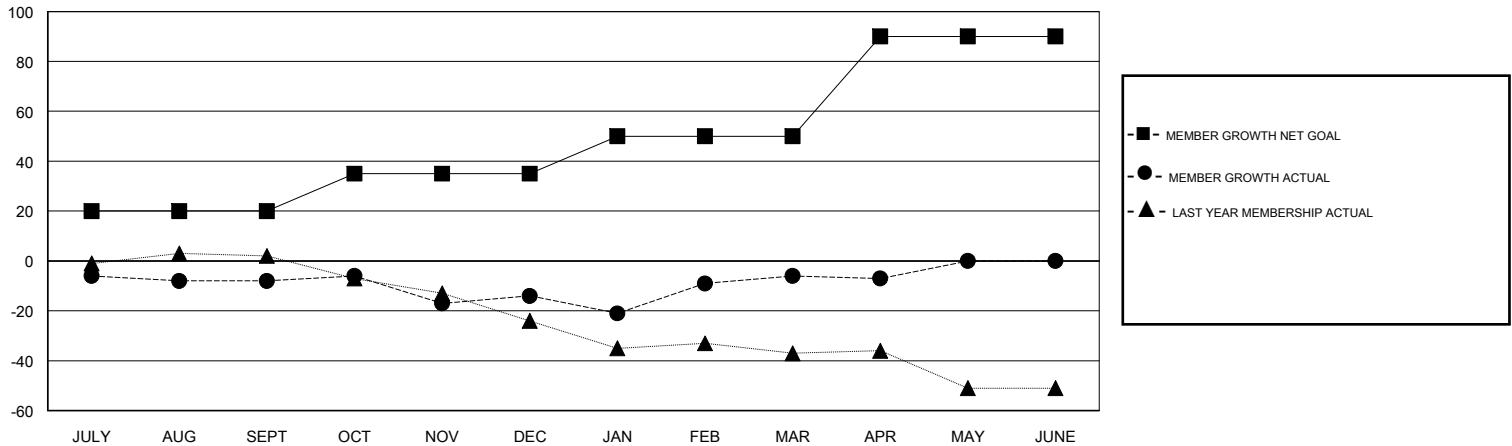
Clubs			
RESULTS FOR 2018-2019			
QUARTER	NEW CLUB GOAL	NEW CLUBS	DROPPED CLUBS
JULY/AUG/SEPT	0	0	1
OCT/NOV/DEC	0	0	0
JAN/FEB/MAR	0	0	0
APR/MAY/JUNE	1	0	0

Members			
RESULTS FOR 2018-2019			
QUARTER	MEMBER GROWTH NET GOAL	MEMBER GROWTH ACTUAL	DROPPED MEMBERS ACTUAL (including transfers)
JULY/AUG/SEPT	20	24	29
OCT/NOV/DEC	15	34	33
JAN/FEB/MAR	15	37	25
APR/MAY/JUNE	40	6	7

GOALS AND ACTUAL NEW CLUBS CUMULATIVE



GOALS AND ACTUAL MEMBERS CUMULATIVE



DROPPED CLUBS: 1	33 CLUBS OF 49 ADDED 1 OR MORE NEW MEMBERS	<u>GENDER DISTRIBUTION</u>	
DROPPED MEMBERS		MALE	683 (69.84%)
DECEASED	14	FEMALE	295 (30.16%)
CLUB CANCELLED	0	Women Percentage Fiscal Year Goal: 32%	
OTHER	80	TOTAL FAMILY UNIT MEMBERS	166
TOTAL	94	FAMILY MEMBERS PAYING HALF DUES	83

[CLICK HERE FOR CUMULATIVE MEMBERSHIP DATA](#)